

宁波市欧度连接器有限公司

NINGBO CITY OUDU CONNECTOR CO., LTD.

XR12系列产品规格书

Information of XR12 series

XR12系列连接器的外壳配合尺寸为12mm，接触对数量有2、3、4、5、7芯五种，可直接安装在面板上使用，连接器外壳为黄铜，外型小巧美观，连接形式为推入式钢球锁紧，插拔迅速方便，本产品适用于各种仪器仪表，电子设备等交直流电路的连接。

XR12 series connector shell with the size of 12mm, the number of contacts are 2,3,4,5,7 can be directly installed on the panel for use on the connector shell brass, compact exterior appearance, the connection forms of for the push-in ball locking plug quickly and easily, this product is suitable for all kinds of instruments and meters, electronic equipment, AC and DC circuit connections.





EGG



FGG



EGG+FGG

产品数字编码 How to order

		EGG - XR12 - F - 5P			
外壳类型:	SHELL TYPE:				
FGG 插头:	FGG PLUG				
EGG 固定式插座	EGG FIEXED SOCKET				
PHG 活动式插座	PHG FREE SOCKET				
壳体号:	SHELL SIZE				
	XR12				
端子类型:	TYPE OF TERMINAL:				
M: 插针	M: male contact				
F: 插孔	F: female contact				
接触对数:	QTY OF CONTACTS				
	2 3 4 5 6 7				

工作温度: $-40^{\circ}\text{C} \sim +100^{\circ}\text{C}$

相对湿度: $+40^{\circ}\text{C} \pm 2^{\circ}\text{C}$ 时, 达95%

频率: 50Hz~60Hz

振 动: 10~500HZ, 加速度 100m/S²

碰撞: 加速度250m/S²

绝缘电阻: 常温状态 $\geq 5000\text{m}\Omega$

湿热状态 $\geq 100\text{m}\Omega$

机械寿命: 500次

Temperature range: $-40^{\circ}\text{C} \sim +100^{\circ}\text{C}$

Relative Humidity: 40°C when the T is over 95%

Frequency: 50Hz~60Hz

Anti-vibration performance :10-500HZ, acceleration of 100m/s²

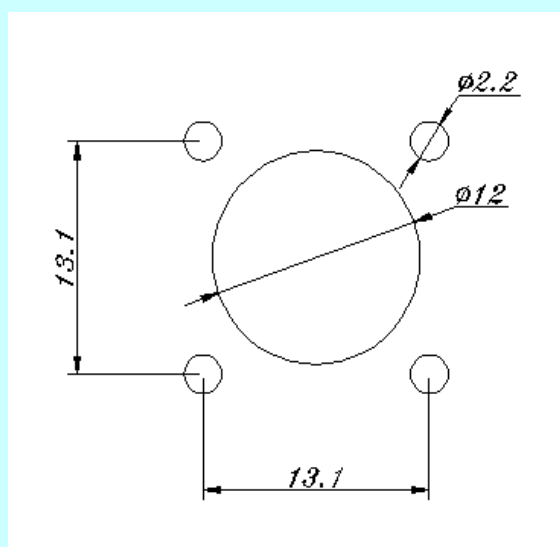
Collision a:250m/S²

Insulation Resistance: normal T $\geq 5000\text{m}\Omega$

wet T $\geq 100\text{m}\Omega$

Life:>500times

面板安装图face-plate installation diagram



产品外形尺寸Shell Size

工作频率 50Hz-60Hz

工作环境 室内外

安装方式 面板安装

外形结构 方形

IP等级 IP67

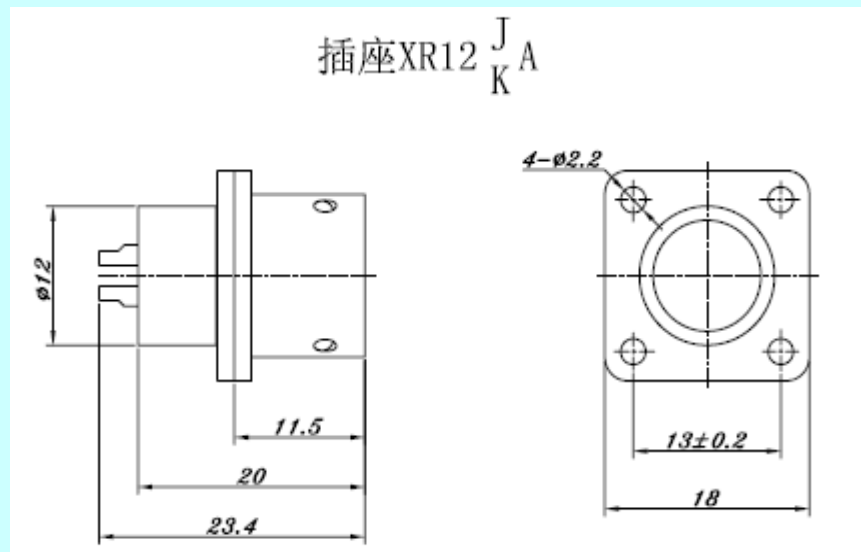
Frequency: 50Hz-60Hz

work enviroment: outdoor

install type: panel

shell frame: square

IP rate: IP67



工作频率 50Hz-60Hz

工作环境 室内外

安装方式 电缆安装

外形结构 方形

IP等级 IP67

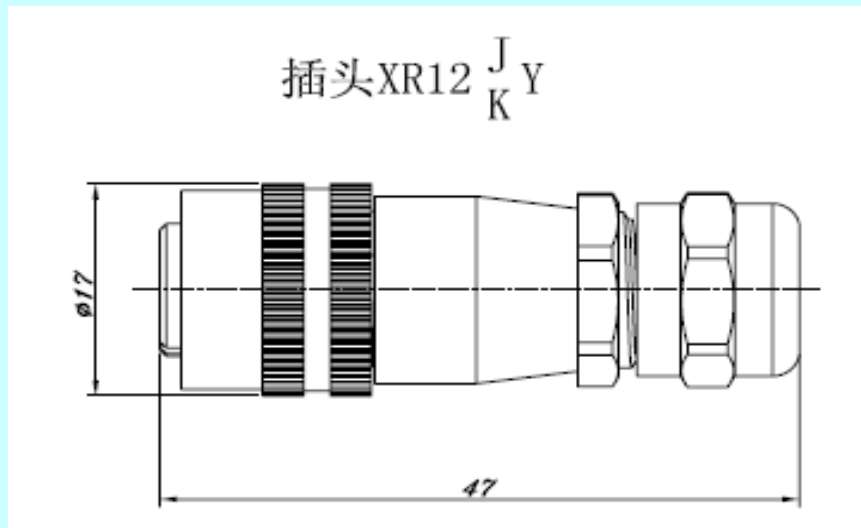
Frequency: 50Hz-60Hz

work enviroment: outdoor

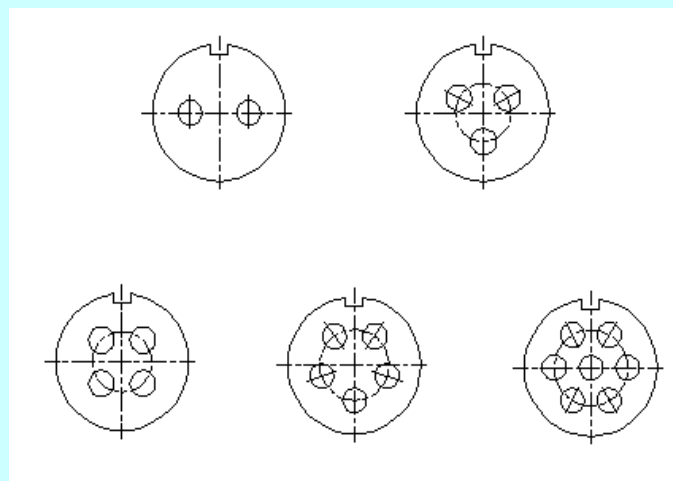
install type: panel

shell frame: square

IP rate: IP67



芯数分布 QTY of contacts

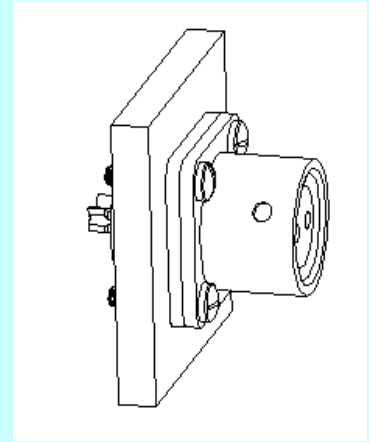


插座使用说明

How to use the receptacle

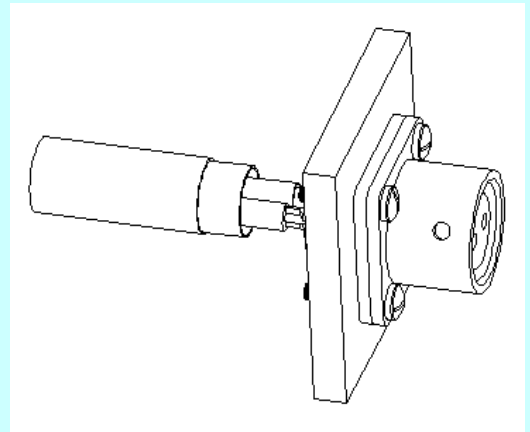
第一步，用螺钉和螺母将产品固定到面板上

The first step,
using screws and nuts fixed to the panel on the product.



第二步，将电缆焊接到针焊接孔上。

The second step,
the cable soldered to the pin welding hole.

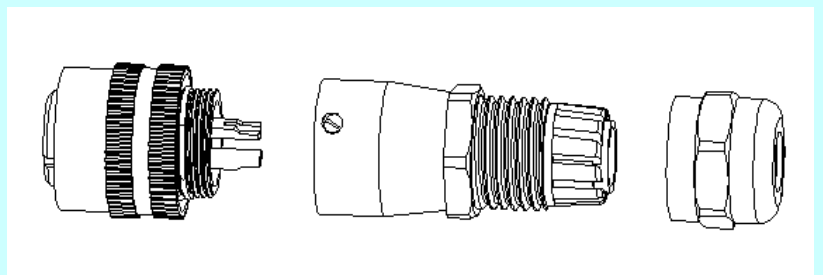


插头使用说明

How to use the plug

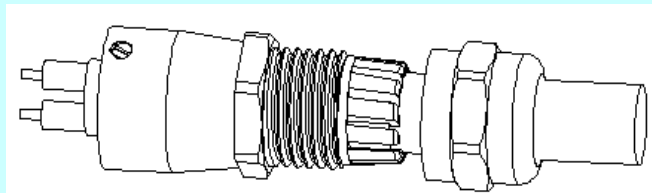
第一步，将零件按如图拆开

The first step, the part according to Figure apart.



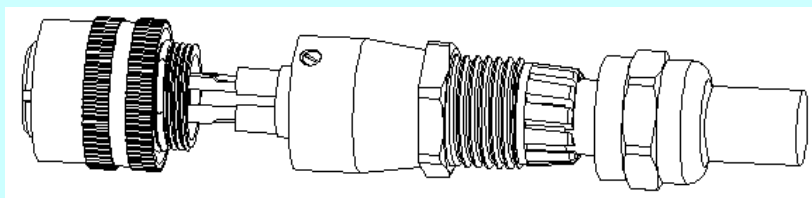
第二步，将电缆依次穿过如图所示部件

The second step, followed by cable through the components shown.



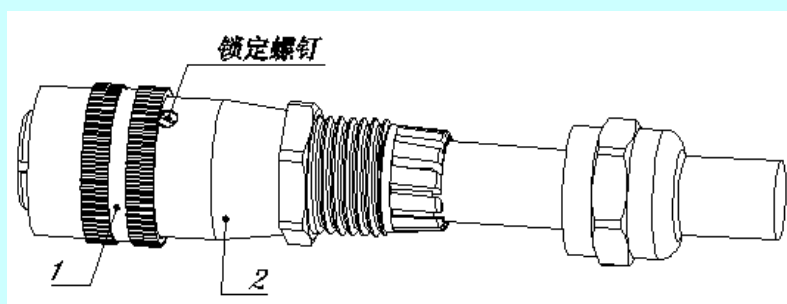
第三步，将电缆焊接到针焊接孔上

The third step is welded to the pin welding cable hole.



第四步，将部件1和2拧紧，
并锁紧锁定螺钉

The fourth step will be tightening parts 1 and 2,
fastening and locking screw lock.



第五步，锁紧尾盖

The fifth step, locking end caps.

